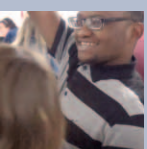


In This Issue:



Kent County Donates to KSI

Kent Levy Court helps KSI's programs.
Page 4



Annual Report for FY23

Fiscal Year 2023 provided many moments of celebration and transformation.
Page 6



Phase One Facelift Completed.

The first section of KSI's Skill Development Center renovation shows what the rest of the facility will look like.
Page 8

PLUS:

- A Message from the CEO.....2
- State Grant for Kamp Lenape.....2
- KSI 5K Changes Location.....4
- Knights of Columbus Donates4
- Golf Tournament a Winner.....5
- Recent Contributors.....10
- Kamp Lenape Supplies Needed10
- Important Dates for 202411
- Friends of KSI Quarter Auction12

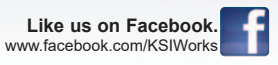


Heath Chasanov Joins KSI as CEO

On December 4, 2023, KSI proudly welcomed Heath B. Chasanov as CEO to lead the organization into its next chapter. For Mr. Chasanov, the move to KSI is also a new chapter in his career. Mr. Chasanov's personal history is steeped in Delaware education. His father Len Chasanov coached basketball at Woodbridge, Seaford and Polytech schools for 25 years, among other scholastic positions. In fact the elder Chasanov

was inducted into the Delaware Basketball Hall of Fame in 2014. Heath graduated from Woodbridge High School in 1987, going on to earn his Bachelor's and Master's degrees from University of Delaware. And it was no surprise that working in education was in Heath's blood when he came out of graduate school. Heath served as teacher, Administrative Assistant, Admissions/Federal Programs

Continued on page 3.



KSI's Mission Is... to assist people with disabilities to live their best lives.

Correspondence regarding KSI News should be directed to KSI News Editor:

ALICIA HOLLIS
301 N. REHOBOTH BLVD.
MILFORD, DE 19963
hollisa@ksiinc.org
(302) 422-4014

You can also read KSI News on the Web at www.ksiinc.org.

BOARD OF DIRECTORS

Travis Frey, Chair
Jesse Spampinato, Vice Chair
Keith Kahn, Treasurer
Dr. Bobbi Barends, Secretary
Shelly Cecchetti
Frederick A. Duffy
Charles Hammond
William Hare,
Jason L. James, Sr.
Dr. Thomas E. Kelly III
Bryan Pepper
Patricia Rodriguez
Dr. Donna Smith-Moore, Immediate Past Chair
William Strickland
Heath Chasanov, CEO

HONORARY BOARD

Joseph Holler
Steve Kimpton
Nicholas Rodriguez, Esq.
Philip Staley



Selected programs have been accredited by the Commission on Accreditation of Rehabilitation Facilities



KSI's United Way Member Agency Designation Number is 340

KSI is an Equal Opportunity Employer.

And as such, we are committed to providing equal opportunity in employment without regard to gender, race, color, national origin, religion, disability, sexual orientation, gender identity, veteran status or any other protected class. If you have any questions about KSI's efforts in this area, please contact the KSI EOE/AAP Officer at 302-422-4014.

Accommodations—In compliance with ADA Amendments Act (ADAAA), should you have a disability and would like to request an accommodation in order to apply for a current open position with KSI, please call (302) 422-4014 ext. 3014 or email us at wilsonb@ksiinc.org.

Kent-Sussex Industries, Inc. is committed to ensuring that no person is excluded from participation in or denied the benefits of its transportation services based on race, color, or national origin, as protected by Title VI in the Federal Transit Administration (FTA) Circular 4702.1B. For additional information on Kent-Sussex Industries, Inc.'s nondiscrimination policies and procedures, or to file a complaint, please visit the website at www.ksiinc.org or contact Michelle Cain, Director of Funding Opportunities and Board Relations at 301 N Rehoboth Blvd, Milford, DE 19963.

A Message from KSI's CEO Heath B. Chasanov



I am excited for the opportunity to join KSI in its mission to help people with disabilities embrace their abilities for better lives. I look forward to working with our community partners, both existing and emerging, to make that mission alive and vibrant in the lives the of people we serve.

KSI is preparing to embark upon a strategic planning initiative that will help us define our way forward for years to come. It will also help us prepare for fundraising to complete renovations and upgrades to both the Milford Skill Development Center (see page 8) and Kamp Lenape that will bring services up to their highest level for KSI participants.

I welcome input about how we can serve our community better. Please contact me with your feedback and suggestions at chasanovh@ksiinc.org to help us better deliver the life-changing services needed.

State Grants to Transform Kamp Lenape for Full Community Benefit

For Fiscal Year 2024, KSI received a sizeable grant of \$249,000 from the State Community Reinvestment Grant (CRG) program to support repairs and upgrades to the Kamp Lenape buildings and property. Combined with \$49,000 in Grant in Aid funding, the CRG funds helped KSI purchase property next to the original Camp Lenape to expand programming capacity. It will also help renovate the historic main building on the Kamp Lenape property.

The Fiscal Year 2024 Bond and Capital Improvements Act allocated \$45,000,000 for the Community Reinvestment Fund to be used for community redevelopment, revitalization and investment in capital projects that will improve the economic, cultural, historical and recreational health of Delaware communities. The 153 recipients for FY24 included community-based and private sector nonprofits, as well as county and local governments.

The State grant funding will make a huge difference in converting the camp into a resource that will serve Kent County families, KSI program participants, future campers and area nonprofits with beneficial programs and services.

“Heath Chasanov” continued from page 1.

Director and Business Education, and teacher for Polytech School District. He was also a Business Manager for the Laurel School District. He became Woodbridge School District Superintendent in August 2012, having previously been the district’s

Assistant Superintendent since 2003. Returning to his home school district of Woodbridge was a matter of giving back to the community from which he’d come.

While he wasn’t planning to retire from the Woodbridge School District, when Mr. Chasanov learned of the leadership position at KSI he saw an opportunity to shift gears and find new challenges after decades in the same sector. He was aware of KSI and the organization’s mission and it interested him as the kind of organization that could both benefit from and engage him as a professional.

“‘Living their best lives.’ When I read that, it was awesome,” Mr. Chasanov related. “I’ve served people my entire life. And when I was looking for my next move, I wanted to make sure it was meaningful. And I knew KSI was that kind of place.”

Coming to KSI, Heath brings a long career of creating programs to



Mr. Chasanov addressed the crowd at the ribbon cutting on December 12, 2023 for KSI’s renovated south programming area.

meet individuals’ needs, as well as his focus on serving the Delaware community. He brings experience in organizational management encompassing administrative procedures and regulations development, as well as extensive financial and large-scale personnel management. He also has extensive connections to legislative and community leaders through his participation on statewide advisory committees and task forces for education leadership. So much of what was involved in his role as school district Superintendent was applicable many other places as well. For Heath, it was all about finding the right match where he could have a truly positive impact on other people’s lives.

“I left a career of 32 years in education, with the last 20 working for the district in which I graduated. Change can be scary. And although I did as much research as possible on KSI, you never really

know if a career move is good until you get there. But in my history, those who work with people who have disabilities have always been ‘heart’ people. That heart for the work is certainly at KSI,” Mr. Chasanov shared. “KSI has a proven record of success and together we will look for opportunities to grow the organization and provide even greater opportunities for our participants.”

Mr. Chasanov has served as President of the Delaware Association of State Personnel Directors, the Delaware Chief School Officers Association and the Delaware Association of School Administrators. He has also served on various statewide committees, including the Public Employees Compensation Committee, the Governor’s School Reopening Committee, Professional Standards Board, the Education Funding Improvement Commission, the Financial Literacy Task Force, The TeachDE Leadership Council, the Delaware Teacher Hiring Task Force, the School District Finance Work Group and the Vision Coalition Executive Leadership Team.

Heath and his wife Caryn Brown Chasanov, who were high school sweethearts, now live in Magnolia. Together, they raised three children, sons Conner and Carter, and daughter Carleigh, who recently married in December 2023.

KSI's 5K Returns in June 2024 with a New Location

KSI's Paths to Possibilities 5K Run/Walk is back on June 8, 2024. But this year we're trying something new. The walk will be held at the Milford Business Park on Airport Road in Milford, with start and finish around Mispillion River Brewing Company.



Along with a great location, the Milford running track is a more accessible route for people of varying abilities, which is really what the KSI 5K is all about. It will be a day of fun, friendly competition and a chance to enjoy one of Milford's most popular destinations after the race.

Sponsorships are available for this premier 5K. To learn more about how you can be part of the Paths to Possibilities event June 8, contact Alicia Hollis; 302-422-4014 Ext. 3015; hollisa@ksiinc.org



KSI Interim CEO, James Greenwell accepts a generous \$1,000 Community Service Grant from Kent County Levy Court. Commissioner Robert "Bobby" Scott, representing the 4th District (right) personally delivered the donation.

\$1,000 Kent County Grant Supports KSI Programs

In October, Kent County 4th District Commissioner Robert "Bobby" Scott personally presented a check for \$1,000 to KSI as part of Kent's Community Service Grant program. The grant funds will enable KSI to continue quality programs through Pre-Vocational training and Life Enrichment programs that help people with disabilities live their best lives.

Community Service Grants are provided to eligible nonprofits that offer programs satisfying unmet needs in Kent County communities. These nonprofits must demonstrate significant community support to receive funds.

Knights of Columbus, St. Joseph Council Donates \$2,019



Shown (left to right) are Knight Tom Farrell, KSI Interim CEO Jim Greenwell, Knights Mark Gajda, Allan Fritz Schmulling, Dominic Romano, and Christopher Miller. Since 2016 the St. Joseph Council #3792 Knights have donated more than \$12,000 to KSI.

In November 2023, the Knights of Columbus, St. Joseph Council #3792 presented KSI with a generous \$2,019.75 check as part of their annual Tootsie Roll Drive fundraising efforts supporting people with intellectual and developmental disabilities. The Council has made donations to KSI an important priority since 2016, resulting in more than \$12,000 in funds to date to bolster KSI's programs and services.

Players Enjoy a Winning KSI Golf Tournament

KSI's Annual Clifford T. Crouch Memorial 3 Club Golf Tournament was held at Maple Dale Country Club in beautiful weather on September 15th, 2023. With 30 teams full of players, the day was complete with extra contests, three food stations on the course, the Excel



KSI's Transportation Manager Sherry Shenk helps out Excel Business Systems' Dee Cairo at their special water ice station.

Business Systems water ice station and more. And the event contributed nearly \$29,000 that supports KSI's programs to make people's lives better.

The tournament was made possible with thanks to Major Sponsors Atlantic Aluminum Products, Dover Federal Credit Union, Integrity Nursing, L&W Insurance, and WSFS Bank.

Golf Cart Sponsors included AT&T, Lewes-Rehoboth Beach Rotary Club, and Sharp Energy. New "Play it Forward" Sponsors were Vaughn &

Craig Crouch, in memory of Clifford T. Crouch and Jan Crouch.

Company; Growmark FS, LLC-Shopworks; M&T Bank; and Tri-Gas & Oil. The Putting Contest Sponsor was Tidewater Utilities. The Milford Lions Club sponsored the Flamingo Fling Ring Toss Contest. Each sponsor, golfer and other contributors are appreciated and made this event successful.



KSI's 3 Club Golf Tournament's first place low gross prize, \$75 cash per person, was awarded to the team sponsored by the Gebhart family. Frank Jones and Dallas Glass joined Evan and Donald Gebhart on the course and in the winner's circle.



Participating in KSI's 3 Club Golf Tournament, Evan Gebhart had a stellar day on the course. Not only was he on the first place low gross team, he also won the Men's Longest Drive contest and was presented a \$25 gift card to Benvenuto Restaurant.

Food Sponsors included: Bally's Dover Casino Resort; Delaware City Refining

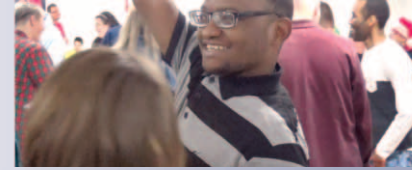
gorgeous Maple Dale Country Club in Dover.

Mark your calendars for the next KSI Annual Clifford T. Crouch Memorial 3 Club Golf Tournament on Friday, September 20, 2024, once again at the



KSI Fiscal Year 2023 Annual Report

By KSI CEO Heath B. Chasanov



In December 2023, I was honored to begin as KSI's CEO, joining an organization that I had been aware of for years and helping it continue to grow and create positive outcomes for hundreds of Delawareans with disabilities. With a 32-year background in education, I hope to bring my expertise in program development, organizational management and community engagement as a partner with KSI's dedicated Board of Directors and staff to take KSI to its greatest potential. However, thanks to the steadfast leadership of Interim CEO James Greenwell, the organization had a very dynamic and productive Fiscal Year 2023, with much good news to share.

One thing the annual stats indicate is a 22 percent rise in mileage for KSI's transportation fleet, rising from 532,154 miles in FY22 to 673,407 in FY23. Much of that is due to some really excellent efforts to take KSI out of the reserved activities demanded by the COVID-19 pandemic and back into the community. In the last year, KSI has initiated the return of many more community trips during programming days. Having groups being able to access community experiences and interact with their fellow citizens

is a beautiful thing. These experiences—whether participating in activities like art classes or volunteering for nonprofits serving the public—help individuals gain important skills and become better participants in their communities.

Something else noticed in this year's numbers over last is the 31 percent growth in participants at KSI's Georgetown Southern



Phase one of KSI's Skill Development Center renovation began in summer of 2023.

Campus. The increase there illustrates the need for more intensive personalized service for people with age- and disability-related challenges who are looking to continue building vital lives. Accepting more individuals waiting to benefit from the Southern Campus's special programs is really dependent upon onboarding more staff at the site. And that will be an important push in FY24.

KSI took a large step to increase its reach in FY23, thanks to the vision and passion of our Vice President of Advancement Ann Haggerty. An opportunity to engage families and children with KSI's way of living and learning became available, and Mrs. Haggerty advocated intently to make that initiative happen. In early 2023, KSI acquired the property and programs of Camp

Lenape from United Cerebral Palsy of Delaware, renovating and reopening it as Kamp Lenape in the summer. The first season of camp in July and August was a great success, with nearly 20 children in KSI's inaugural group. Additionally, thanks to State grant funding, the organization was able to purchase the property next to the camp and plans to add more facility space to increase Kamp

Continued on page 11.

FY 2023 Financial Statement**Revenue**

Contributions	\$145,909	1.8%
Contributions In-Kind*	\$862,243	10.4%
Fund Raising Events & Special Activities	\$83,392	1.0%
Federated Fund Raising	\$83,100	1.0%
Fees and Grants from Government Agencies	\$4,721,074	57.1%
Sales to Public	\$1,690,510	20.5%
Investment Income	\$455,399	5.5%
Rental Income	\$154,490	1.9%
Miscellaneous Revenue	\$67,012	0.8%
Total Revenue	\$8,263,129	100.0%

Expenses

Program Services	\$4,396,031	59.6%
Transportation	\$1,479,194	20.0%
Development	\$214,284	2.9%
Management & General	\$1,288,483	17.5%
Miscellaneous Expenses	\$0	0%
Total Expenses	\$7,377,992	100.0%
Excess/Deficit	\$885,137	

* Includes \$663,583 in donations to Kamp Lenape.

FY 2023 Participant Transportation**Revenue**

Contributions	\$191,846	9.6%
Non-Government Grants	\$424,727	21.2%
Fees & Grants from Government Agencies	\$1,359,848	67.8%
Miscellaneous	\$29,218	1.5%
Total Revenue	\$2,005,639	100.0%

Expenses

Salaries & Benefits	\$780,756	45.6%
Insurance & Professional Services	\$64,221	3.7%
Gas & Oil & Maintenance	\$328,282	19.2%
Housing & Occupancy	\$4,540	0.3%
Equipment & Supplies	\$34,190	2.0%
Depreciation	\$216,844	12.7%
Miscellaneous	\$7,169	0.4%
Subtotal	\$1,436,002	83.8%
Proration of Management & General	\$277,768	16.2%
Total Expenses	\$1,713,770	100.0%
Excess/Deficit	\$291,869	

FY 2023 KSI Program Data

Total No. Participants *	233
No. Participants Served by Program **	
SDC Life Enrichment Services-Milford	53
Life Enrichment Services-Georgetown	19
Skill Development Center Pre-Vocational Services	97
Community Based Pre-Vocational Services	19
Temp Work Crews	18
Explore Program	25
No. Businesses Subcontracting to KSI	7
No. Of Contracts Awarded	4
No. Community Based Work Crews	3
No. KSI Cartridge Service Customers	74
Total Subcontract Income	\$1,691,640
Total Participant Wages	\$506,069
Total Unfunded Production Worker Wages	\$211,491
Total Participant/Unfunded Production Worker Wages	\$717,560
Total Staff, Including Drivers	91
Total Kamp Lenape Seasonal Staff	14
Total Miles Logged by Vans & Buses	673,407

* Unduplicated Count—includes The Explore Program.

** Some participants were in 2 or 3 programs.

Note: Total participant wages includes all disabled workers. Total unfunded production worker wages only includes non-disabled casuals.

FY 2023 Specific Breakdown of Subcontract Income**Community-Based Work Services**

Work Crews	80.33%	\$1,358,927
------------	--------	-------------

Skill Development Center Rehabilitation & Training

Packaging	2.20%	\$37,270
KSI Cartridge Service	5.70%	\$96,446
Mailing	0.04%	\$ 652
Assembling	11.73%	\$198,346
Other	0.00%	\$ 0

Subtotal	19.67%	\$332,713
-----------------	--------	-----------

Total Subcontract Income FY23	100.00%	\$1,691,640
--------------------------------------	----------------	--------------------

KSI Unveils First Renovations to Milford Skill Development Center

KSI took its first steps towards transforming the Milford Skill Development Center from the production space it had been since 1985 to a more inviting and comfortable atmosphere where people can learn and grow. On December 12, 2023, KSI unveiled the first phase of renovations to its southern wing programming area. The redesign created a bright and friendly space in which participants can be proud to share their days.

It's been a long-standing objective of KSI's board and management to move away from the manufacturing plant-style open ceilings, concrete flooring and noisy space that defined KSI's Milford facility since it was purchased by the organization in the 1980s. While that set-up was conducive to the in-house assembly, packaging, kit making, rework and other production jobs that kept everyone busy up until the early 2000s, it didn't work as well when the organization transitioned from purely a pre-vocational training program to options that were more about education. It was hard for non-work participants trying to focus on learning skills and gaining abilities when there were so



KSI Ribbon Cutting December 12, 2023. Pictured left to right are Milford Mayor Archie Campbell; State Rep. Daniel Short; State Sen. David Wilson; KSI Director of Community Relations Alicia Hollis; KSI Board of Director Members William Strickland and Treasurer Bobbi Barends; State Reps. Charles Postles and Jesse Vanderwende; KSI CEO Heath B. Chasanov; KSI Vice President of Operations Linda Pearson; KSI Vice President of Finance and Technology Jim Greenwell; KSI Board Members Dr. Thomas Kelly, Frederick A. Duffy, Patricia Rodriguez, Vice Chair Jesse Spampinato, Secretary Keith Kahn and Charles Hammond; State Rep. Ronald Gray; and KSI Assistant Vice President of Operations Kristin Elliott.

many distractions around them.

The crowd that attended the December 12 Ribbon Cutting, which was presented in cooperation with the Chamber of Commerce for Greater Milford, included a number State and City legislators. On hand were State Senator Dave Wilson; State Representatives Ronald Gray, Charles Postles, Danny Short and Jesse Vanderwende; as well as Milford Mayor Archie Campbell.

"It's near and dear to my heart what happens here," said State Sen. Dave Wilson. "It's just a good group of people we need to do more for. I can't think of anything we can spend money on that's

a better investment than that."

State Rep. Daniel Short remembers KSI being one of his visits for Blue Cross Blue Shield when he worked for them. He was one of the participants in KSI's very first 3 club golf tournament 33 years ago and respected the innovative spirit of the organization.

"KSI is going to work even better now," Rep. Short related. "KSI does much like we should do as legislators—make a difference one life at a time."

Also there to mark the occasion was KSI's new CEO Heath B. Chasanov, who started with the organization officially on December 4. Seeing the transition of KSI's

facility from a warehouse to a more classroom setting was a positive development for Mr. Chasanov, who was a 32-year educator and most recently Superintendent for Woodbridge School District.

“For 32 years, I’ve served students and families. And I wanted an opportunity to continue serving people,” Mr. Chasanov said addressing the event crowd. “I’m absolutely honored to be part of this. I’m really excited about the staff we have here and some of the opportunities before us.”

The total budget for all three phases of center rework will exceed \$3.3 million. But for the KSI management team, it’s a long-coming dream come true. Design work was performed by Davis, Bowen & Friedel, with Brendon T. Warfel Construction serving as the project’s general contractor. As indicated, this project was the precursor to future rework of the middle and north end programming areas to give all participants a bright, clean space to learn the skills for better living.



The renovated space features lower ceilings with acoustical tiles for better sound control, which is helpful in managing personal anxieties due to high noise situations. It also includes upgraded computer systems and more efficient HVAC utilities for comfort. The four-unit air system is equipped with fresh air intakes to ensure healthy

circulation. Adjustable lighting will offer flexibility in environmental character depending on situations. In

the middle of the large space will be retractable partitions to create separate learning spaces and cut down on distractions during life skills lessons.

However, not all of the renovations were interior. Exterior doors were moved to directly enter the new space, as well as new steps to match one of the new entrances. The exterior ramp

entrance was also reworked to be more navigable by participants using wheelchairs, using a mid-landing to make the turn safer and more navigable during use. New white spindled railings were also added to increase safety and attractiveness of the ramp.

This first phase of center rework was fueled by existing funds previously earmarked for capital improvement projects and a Community Reinvestment Grant from the State of Delaware. However, the next two phases will definitely involve partnerships with foundations, corporations and donors as part of a wide-reaching capital campaign to complete the Skill Development Center renovation.



Shots of the KSI south wing in June (above) and as of December 12, 2023 show the drastic change that will eventually encompass the entire Milford Skill Development Center.

Recent Contributors September 1 - December 31, 2023

Mr. & Mrs. Tony Abbate
Ms. Jessie Adams
Advantage Irrigation
Mr. Frank Alberio
Mr. & Mrs. Chris Argo
Baileys Marble Works
Mr. George Bailey in
Honor of George &
Rosalinda Bailey
Ms. Ann Baker Horsey
Mr. & Mrs.
P. Brooks Banta
BAR-SGR, LLC
Mr. & Mrs.
Richard Barlow
Ms. Becky Bastianelli
Ms. Pam Bauer
in Memory of
Ann Haggerty
Best Ace Hardware
Ms. Patricia Boone
in Memory of
Terrence Christian
Ms. Sarah Botte
Mrs. Virginia Boutin
Dr. John Boyer
Mr. & Mrs. John Brink
Mr. & Mrs. Paul Bryan
Ms. Celeste Bunting
in Memory of
Terry Christian
Ms. Michelle Cain
in Memory of
Mark E. Cain
Ms. Bettie Campbell
Ms. Beverly Cannon
in Memory of
Ann Haggerty
Mr. James Cannon
Mr. Keith Carey
Carey's Church, Health
& Welfare Committee

Mr. & Mrs.
Heath Chasanov
Chesapeake Utilities
Corporation
Mr. James Cohee
Community Bank
Delaware
Mrs. Hanna Conrad
Mr. William Cooper
Mrs. Patricia Crabb
in Memory of
Dr. Richard Crabb
Ms. Bessie Crain
Mr. B. Craig Crouch
Mr. & Mrs.
C. Trent Crouch
Mrs. Vaughn Crouch
Mrs. Vaughn Crouch
in Memory of
Clifford T. Crouch
Mrs. Paula Davis
in Memory of
Mike McDonald
Delaware City
Refining Company
Mr. Kurt Dinkelacker
Mr. & Mrs. Bruce Dolby
Downes Insurance
Associates, Inc.
Mr. Eugene Dvornick
Mr. Richard Ebert
Excel Business Systems
Ms. Ida Faucett
Mrs. Douglas Flanagan
in Memory of
Douglas Flanagan
Ms. Angela Fleming
Mr. & Mrs.
Frederick Gallagher
Ms. Robin Gayer-Sirkis
George & Lynch, Inc.
Mr. & Mrs. David Gerni

Dr. & Mrs.
Arthur Gilbert
Mr. & Mrs.
Ronald Gomes
Mr. James Greenwell
Growmark FS, LLC-
Shopworks
Mr. Leonard Hall
Mrs. SaraKate Hammer
in Memory of Jane
Kohler & Louise
Hamilton
Mr. William Hare
Mr. Ron Harris
Mrs. Cheryl Hoey
Ms. Alicia Hollis
in Memory of
Ann Haggerty
Ms. Deborah Horn
Mr. Thomas Hoyer
Ms. Barbara Hurley
J.H. Wilkerson
& Son, Inc.
Ms. Nina Jenkins
Ms. Charlotte Kemp
Mrs. Veronica Kidd
in Memory of
Terrence Christian
Mr. Benjamin King
Knights of Columbus-
St. Joseph Council
Mr. Robert Koppenhaver
Mrs. Kathleen Kunkle
L & W Insurance
Lions Club of Clayton
Lions Club of Milford
M&T Bank
Mrs. Diana Maczynski
Maillie LLP
Ms. Dinah Marshall

Mr. & Mrs.
Randy Marvel
Mr. & Mrs. Donald
McDonough
Mr. Patrick McKenzie
Mr. & Mrs. Mike
McPhail
Mr. Wendell Merrick
Midtown Liquor Inc.
Napa Auto Parts
Milford, Milton,
Harrington
National HVAC Service
Mrs. Jane Mow
in Memory of
Bonnie Twilley
Ms. Crystal Newcomb
Mrs. Sandy Nickerson
Ms. Lilian Ortiz in
Honor of Lou Nepar
Mr. & Mrs.
Bryan Pepper
Ms. Catherine Piper
Mr. & Mrs. Keith Poling
in Memory of
Terry Christian
Mrs. Alta Pontius
Psychiatric Access
for Central DE, P.A.
Mr. James Radesky
Dr. Andreas Rauer
Records-Gebhart Agency
Mrs. Vera Reed
Mr. James Reynolds
Ms. Phyllis Rhoades
Mr. Preston Ridgley
Dr. H. Earl Roberts
Ms. Lucille Rogers
Ruritan Club,
Bi State, #2151
Mrs. Brenda Rutherford

Mrs. Carolyn Sames
Seaford Machine
Works, Inc.
Shorely Beautiful LLC
Mr. & Mrs.
F. Gary Simpson
Dr. Donna Smith-Moore
in Memory of
Mary Roberts
Dr. Donna Smith-Moore
Dr. James Speegle
Mr. & Mrs.
Thomas Spiezio
Mrs. Angela Spishock
Mrs. Shirley Steele
Mrs. Shirley Steele in
Memory of Bud Steele
Mr. & Mrs.
Ronald Stevens in Honor
of Michelle Gomes
Ms. Susan Stevenson
Mr. & Mrs.
Stephen Thompson
Towers Signs
Tri-State Carpet
Ms. Georganne Wagner
Dr. & Mrs.
Jason Walther
Mr. & Mrs.
Kendall Warrington
Mr. & Mrs. John Watson
in Memory of
Terrence Christian
Ms. Naomi Wayman
Weller's Utility Trailers
Mrs. Earlue Woodall
in Honor of
Betina Bonville
Mr. Richard Wyatt
Ms. Janet Yonker
Ms. Elizabeth Zucker

Kamp Lenape Campers are in Need of Supplies for the 2024 Campers



KSI is ramping up for the 2024 season of Kamp Lenape in July and August. And campers are in need of supplies for all the fun crafts and activities that make Kamp Lenape so special. If you're able to donate some of these items, you'll make a huge difference in their summers.

Acrylic Paints
All Purpose Flour (2)
Balloons
Beads
Bracelet
Stretchy String
Bright Light:
Ring Light
Candy
Canvas-8X10 in.
Coffee Filters
Construction Paper
Cotton Balls
Craft Pom Poms
Dried Beans
Dried Rice
Elmer's Glue

Face Paint Set
Feathers
Felt
Glitter
Googly Eyes
(Large/Small)
Glue Sticks
Hole Puncher
Hot Glue Gun
Kick Balls
Large Car Sponges
Marbles/Stones
Masking Tape
Mini Glue Sticks
Paint Brushes
Paper Lunch Bags

Paper Plates
Pin Tail Donkey
Ping Pong Balls
Pipe Cleaners
Plastic Disposable
Plates
Plastic Sewing
Needles
Plastic Straws
Pop-Its/Fidget Toys
Popsicle Sticks
(Large/Small)
Poster Board
Potting Soil
Ribbon
Rubber bands
Scotch Tape

Sidewalk Chalk
Solo Cups
Spray Sealant
Stickers
Styrofoam Balls
Tempera Paint
Tissue Paper
Tooth Picks
Water Balloons
Wax Paper
White Card Stock
White Spray Paint
Wild Flower Seeds
Wooden Clothes Pins
Yarn

Contact Crystal Hughes at hughesc@ksiinc.org to learn more.

“Annual Report” continued from page 6.

Lenape’s use year-round. It was also discovered through research about the Kamp Lenape property that the main building was actually one of the few remaining schools for African American communities built through the efforts of Pierre S. du Pont in the 1920s. KSI has already started the process of getting a historical marker to highlight the structure’s significance in Kent County. It was Ann Haggerty who originally saw how positively Camp Lenape impacted the community around it and wanted to see that influence continue into the next generation. The KSI family sadly lost Mrs. Haggerty suddenly in May of 2023. But the organization is committed to continuing her vision for Kamp Lenape and expanding it to offer even more services for Kent County families and children with disabilities.

Something else that was very exciting for KSI in FY23 was Phase 1 of the Milford Skill Development Center renovation, which took place during summer and fall of 2023. More than 6,175 square feet of programming space at the south end of the facility was transformed from manufacturing-style warehouse space to an intimate and comfortable environment to help people learn and grow. Upgrades offer so many meaningful improvements, including better environmental control, light control, space partitioning and sound quality. With this first phase funded in a large part through a \$600,000

State Community Reinvestment Grant, the final price tag for all renovation phases will exceed \$3.3 million. However, it is incredibly gratifying to see participants walk into the new Life Enrichment Program room for the first time and see beautiful architectural design, fresh paint, woodgrain-patterned flooring rather than concrete, plush seats and new furniture, and a space that is theirs alone to enjoy. It provides an environment that allows them to live their best lives in comfort, dignity and respect. And that’s a truly worthy investment.

That’s not to say that the funds for the completion of that investment will be easy to come by. While federal funds have helped numerous nonprofits recover from COVID-19 setbacks and set their courses for the way ahead, that funding is drying up. Not only will funding issues affect general operations for KSI, it will also determine how fast we move forward with planned improvements, both capital and institutional, in the year ahead. KSI management is already gearing up to bring in more program participants and keep pace with staffing and facility costs. However, greater support and partnership with community donors and large funders will be a priority in FY24. We look forward to moving ahead, and working with our extended “family” to make this organization ever-better for Delawareans seeking to improve their lives.

Save the Date in 2024

Be sure to mark these important dates on your 2024 calendar. And follow KSI at [www.Facebook.com/KSIWorks](https://www.facebook.com/KSIWorks) to keep informed of new events as they develop.

January

15 KSI Holiday,
Martin Luther King, Jr. Day

May

4 **Friends of KSI
Car Show**

27 KSI Holiday, Memorial Day

June

8 **KSI 5K Run/Walk** at
Mispillion River Brewing Co.

July

4 KSI Holiday,
Independence Day

September

2 KSI Holiday, Labor Day

20 **KSI Annual 3 Club Golf
Tournament**, Maple Dale
Country Club

October

18 **Friends of KSI
Quarter Auction**

26 **The KSI Monster Bash**
at the Knutsen Farm,
Harrington, Delaware

November

28 KSI Holiday, Thanksgiving Day

29 KSI Holiday

December

25 KSI Holiday,
Christmas Day

26 KSI Holiday

27 KSI Holiday

Friends of KSI Quarter Auction Raises Fun and Funds



Friends of KSI organizer, Angela Spishock (center) got the table ready for 50/50 and raffle ticket sales. Linda Eckert, to the right, has been involved with the Friends of KSI Quarter Auction since its inception. To the left is Arthur Bunting, her brother and the reason she started Friends of KSI in 2013. She wanted to help the agency that had a huge impact on her brother's life.

The 11th Annual Friends of KSI Quarter Auction brought more than 80 guests together to have a whole lot of fun while raising funds and awareness for KSI and its mission. Held October 20th at the Farmington Fire House, Angela Spishock and her team of dedicated volunteers

put on a great night of refreshments, raffles, door prizes, 50/50 chances and bidding on dozens of premium packages.

The Quarter Auction garnered a \$5,000 donation to KSI, thanks to the efforts of Mrs. Spishock, Kathy Bunting, Linda Eckert,

Frances "Frannie" McQuery is part of the Friends of KSI group and she welcomed quarter auction attendees, explains the purchase of paddles, and informed guests about other ways they could win during the evening.

Crystal Southard and Frannie McQuery. In the last 11 years, with combined fundraising from Friends of KSI's annual auctions and car shows, the volunteer group has contributed more than \$42,000 to help Delawareans with disabilities.



Crowds may vary from year to year. But they're always steeped in anticipation of finding out who won which of the amazing packages up for bid.

Mark Your Calendars for Do More 24 Delaware, March 7-8

Support KSI during United Way of Delaware's 2024 Do More 24 Campaign. You can go to KSI's fundraising page at <https://www.domore24delaware.org/fundraisers/ksi> to donate during the event.