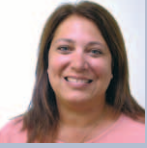


In This Issue:



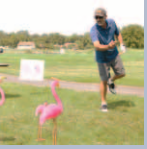
FOKSI Car Show Returns

Friends of KSI brought back its fun-filled car show in May. [Page 2](#)



Remembering Ann Haggerty

KSI loses an important part of its family in the passing of our Vice President of Advancement. [Page 4](#)



Get Ready for the Golf Tournament

There's plenty of time to become part of KSI's premier fundraiser in September. [Page 6](#)

PLUS:

- Milford Lions Grant \$3,0002
- The 5K Coming June 10.....5
- Recent Contributors6
- Monster Bash Returns.....7
- \$20,000 Granted for Tech.....8
- KSI Explores Custodial Crews8



(Left to right) KSI Director of Community Relations Alicia Hollis; Past KSI Board Member Scott Ward; Milford School District Director of Student Services Laura Manges; KSI Board Member Frederick A. Duffy; Alan Moore; KSI Director of Human Resources Barbara Wilson; CACFP Education Associate Aimee Beam; KSI Champion Suzy Hutchison; KSI Board Chair Dr. Donna Smith-Moore; KSI's Brenda Rutherford, Dawn Welch, Crystal Hughes and Michelle Cain; Kamp Lenape Director Kim Tuder; KSI Interim CEO James Greenwell; KSI Vice President of Advancement Ann Haggerty; KSI Board Member William Hare; DDDS's Mike Erixson; KSI Board Member Jesse Spampinato; DDDS's Heather Delgado; Eunice Hammond; State of Delaware's Candy Caporale; KSI Board Member Charles Hammond; Embrace Delaware Executive Director Abby Stewart; and Delaware Sec. of Education Mark Holodick.

KSI Launched Kamp Lenape Summer Camp in Felton on April 4th

KSI launched a new venture for the organization on April 4, 2023 when it reopened a Kent County mainstay. Camp Lenape officially became “Kamp Lenape,” a summer program for children of varied abilities looking for fun and growth. Located at 3249 Midstate Road in Felton, Delaware, the camp’s long history was in danger of ending until a key person on KSI’s team stepped in to save it.

Camp Lenape was created in 1972 to give individuals with orthopedic conditions a special place where they could have fun and exciting opportunities during the summer months. Originally run

through United Cerebral Palsy (UCP) of Delaware, it grew to include children with and without disabilities looking to grow in a comfortable environment with a close-knit group of friends.

In 2022, Camp Lenape was headed towards discontinuing its programs because of funding issues. Loss of the camp would create a huge vacuum in summer and respite services that families had counted on for decades. It happened that KSI Vice President of Advancement at the time, Ann Haggerty, had a son with Down Syndrome, Justin, who attended Camp Lenape two years in a row and had

Continued on page 3.

KSI's Mission Is... to assist people with disabilities to live their best lives.

Correspondence regarding KSI News should be directed to KSI News Editor:

ALICIA HOLLIS
301 N. REHOBOTH BLVD.
MILFORD, DE 19963
hollisa@ksiinc.org
(302) 422-4014

You can also read KSI News on the Web at www.ksiinc.org.

BOARD OF DIRECTORS

Travis Frey, Chair
Jesse Spampinato, Vice Chair
Keith Kahn, Treasurer
Dr. Bobbi Barends, Secretary
Shelly Cecchetti
Frederick A. Duffy
Charles Hammond
William Hare
Jason L. James, Sr.
Dr. Thomas E. Kelly III
Bryan Pepper
Patricia Rodriguez
Dr. Donna Smith-Moore, Immediate Past Chair
William Strickland

HONORARY BOARD

Joseph Holler
Steve Kimpton
Nicholas Rodriguez, Esq.
Philip Staley



Selected programs have been accredited by the Commission on Accreditation of Rehabilitation Facilities



Community Partner

KSI's United Way Member Agency Designation Number is 340

KSI is an Equal Opportunity Employer.

And as such, we are committed to providing equal opportunity in employment without regard to gender, race, color, national origin, religion, disability, sexual orientation, gender identity, veteran status or any other protected class. If you have any questions about KSI's efforts in this area, please contact the KSI EOE/AAP Officer at 302-422-4014.

Accommodations—In compliance with ADA Amendments Act (ADAAA), should you have a disability and would like to request an accommodation in order to apply for a current open position with KSI, please call (302) 422-4014 ext. 3014 or email us at wilsonb@ksiinc.org.

Friends of KSI Car Show Comes Back in Style



Hot rod and classic automobile lovers had their literal day in the sun when the volunteer fundraising group Friends of KSI held its 6th Annual Car Show on Saturday, May 6, 2023. Located on the

grounds of the KSI Skill Development Center in Milford, registration started 8 a.m. with a \$15 donation per car. Show time ran 9 a.m. and 2 p.m. The first 75 cars registered received dash plaques, 20 trophies were awarded at 1 p.m. for some of the most popular entries and a Best in Show trophy went to the most outstanding car. And as a result, a generous donation of \$1,620 from the Friends of KSI will help fund KSI's programs for people with developmental disabilities.

Attendees had plenty to enjoy during the day. They could buy chances to win a 50/50 raffle drawn at the end of the day. DJ Missy Jo was on hand to provide entertainment and keep things jumping. Uncle Bernie's Steak Shack offered delicious breakfast and lunch options throughout the show. And Kiss My Axe of Milford, Delaware provided a little distraction with a thrill.

For information on the 2024 Friends of KSI Car Show as it becomes available, contact coordinator Angela Spishock at 302-222-0754, or email her at magneticfashion4you@aol.com.

Milford Lions Club Grants KSI \$3,000 from the Eunice Reed Fund

The Milford Lions Club awarded KSI a \$3,000 grant from the Eunice S. Reed Fund to help finance programs at Kamp Lenape. With KSI's first season hosting the camp starting July 5, these extra funds will go a long way to supporting camper sponsorship, supplies purchases and expenses from trips and special events. It will help make Kamp Lenape the most wonderful experience possible for children with and without disabilities.



The Eunice S. Reed Fund grant program was started by the Milford Lions Club to help recipients develop or expand projects of significant benefit to the Greater Milford Community. Named after Eunice Smith Reed, who passed away in 2004, the grants help scores of nonprofits with everything from construction projects and special initiatives to cultural and assistance programs that benefit community members.

“Kamp Lenape” continued from page 1.



Camp Director Kim Tuder and Integrity Nursing's Derek Sheets are ready for 2023.

a magnificent experience. She knew how important the camp was to her own family, and knew what its loss would mean to so many others.

So when Mrs. Haggerty found out what was happening, she saw an opportunity to preserve this valuable resource for children with disabilities and their families. She brought the facts of the matter to KSI's management and laid out the case for the organization to continue the camp's legacy.

“The children in our community need it,” said Mrs. Haggerty. “Not only the children, but the families need it. The families need our help. They need us to help guide their kids and have the camp for kids to go and have fun for the summer. I asked KSI, ‘What are we going to do?’”

Not only was Camp Lenape an important asset to the people KSI served, it would also be the beginning of a relationship with individuals and families who could definitely benefit from KSI's services when campers graduated from school at 21. Mrs. Haggerty remembered, “The entire team looked at each other and said, ‘Look, if we can get the camp, we're all in.’”

KSI acquired the property from UCP in 2023 and is reopening it this summer as KSI Kamp Lenape, offering the same fun-filled summer programs people have enjoyed at the site since the 1970s. Activities campers will enjoy include crafts, sports, onsite swimming, community trips to fairs and events and more. Days also include visits of representatives from local police departments, fire houses, wildlife agencies and other groups. And there's plenty of room on the grounds to run, play basketball and dance. Lunch is provided daily for all campers.

To manage Kamp Lenape, a familiar face is returning as Director—Kim Tuder. Kim's personal experience with the camp started in 1999 at age 14 as a volunteer, and the camp really made an impact on her. She eventually became Camp Director, and the campers became more like family every year for her. When funding started getting scarce in later years, she personally went out to community sites to fundraise and keep the summer programs going. Returning as Director for Kamp Lenape means keeping a life-long legacy going.

“Just the vibe that the campers bring here, and the joy that you see in their little faces when they come here each summer, gets us to come back,” explained Mrs. Tuder. “There are not a lot of opportunities throughout Delaware for inclusion. So it's very important to have this here. Seeing them, and the joy and the friendships they make is what I look forward to.”

Joining Mrs. Tuder on the camp staff is Derek Sheets, RN of Integrity Nursing, who will head up the health and safety at Kamp Lenape. Also adding to the camp's operation is KSI's agency structure that will handle all human resources, funding, procurement and many other support functions to keep the camp viable and thriving.

“It's a joy to know that a nonprofit has stepped in to obtain this property to still cater to those with or without disabilities and to keep our community working together. It's amazing,” Mrs. Tuder said. “So I got to make some happy phone calls and let everyone know we were back open.”



Giving kids a place of inclusion and fun during the summer is what Kamp Lenape is all about.

Running July 5 to August 11, Kamp Lenape is open to children with disabilities ages 7-21 years old, and children without disabilities 7-13 years of age. Programs occur Mondays through Fridays, 8 a.m. to 3 p.m. Cost is \$300 per camper per week. Families can also use Delaware Respite funding to pay for Kamp Lenape. Contact your Community Navigator to learn how.

Find out more by emailing KampLenape@ksiinc.org.

KSI and the Community Lose a Bright Light in the Passing of Ann Haggerty



Ann and her son, Justin.

On May 7, KSI lost a beloved and crucial part of its family in the passing of Vice President of Advancement Ann M. Haggerty. Her personal passion, resources and commitment made an immense difference to the betterment of people's lives not only at KSI but throughout the state of Delaware.

Born on November 3, 1970, Ann Marie (McMullen) Haggerty grew up on a Woodside, Delaware Christmas Tree Farm, starting her professional experience in jewelry sales before developing her career in disability services. In addition to raising their accomplished daughter Jenna, raising two sons with disabilities—Brandon and Justin—cemented Ann's and her husband William's far-reaching and passionate commitment to changing the lives of Delawareans with disabilities.

After being inspired as part of a KSI tour with the DFRC Board of Trustees, Mrs. Haggerty started working with KSI in March of 2014 as

an Employment Specialist in the organization's Supported Employment program. And she soon showed her amazing dedication to increasing successful community employment opportunities and partnerships to benefit her participants. She left KSI in May of 2016 to work with the Delaware

Division of Developmental Disabilities Services, gaining statewide perspective on the needs of children and families receiving services.

Mrs. Haggerty returned to KSI in August of 2017 to manage the Supported Employment program and greatly multiplied the amount of community job placements and successes for scores of individuals. In 2020, Ann was promoted to Vice President of Advancement, quickly increasing KSI's profile in the state and expanding fundraising efforts to better support the organization. As Vice President, Mrs. Haggerty was a strong and instrumental leader helping to continue high levels of service and organizational excellence throughout Covid-19 challenges and sudden shifts in executive management.

Through her life as a parent of children with disabilities, as well as her experience with DFRC, Ann was able to bring

the partners to the table to help KSI continue moving forward. Her fundraising and community contacts helped to grow KSI's events, creating greater support for its programs. She enhanced the organization's focus on staff appreciation to make sure KSI team members felt valued and recognized.

In 2022, she became aware of an endangered summer program for children of varied abilities, Camp Lenape, which was losing its funding. Her son Justin had spent two enjoyable years there and Ann decided KSI would be the perfect steward to ensure it continued. KSI's Kamp Lenape will keep her dream alive with summer programs running July 5 through August 11 this year. And the organization is committed to improving the camp's facilities and programs in the years to come.

Ann Haggerty was an immensely compassionate and generous person with a heart that included nearly everyone she met in the beauty of her world. She constantly stopped her busy days to talk with KSI's participants and staff to see how they were doing. She went out of her way to bring something good to each day. There's so much of her positive spirit in how KSI has grown and developed in the last several years that her spirit will live on within the organization for many years to come.

Paths to Possibilities 5K Run/Walk Coming in June



A group of enthusiastic participants made the first Paths to Possibilities event a great time. And this year should be even better.

Paths to Possibilities returns on June 10, 2023 for those who love a great run or walk

in a beautiful setting while supporting better lives for people with disabilities.



It's hard to beat the beauty of Killens Pond State Park as a site for a 5K.

This 5K course is set in the lush beauty of Killens Pond State Park's 257 acres of pond wetlands, mature forest and plentiful Delmarva wildlife.

Runners/walkers can register online (See instructions below). Each participant is outfitted with a chip for timing and placement during the event. And awards will be given out to

those with best times on the course. It's a day of fun, food and camaraderie to help people with disabilities reach their highest potential.

Registration as a runner/walker in the 5K is \$30. Register by going to FusionRaceTiming.com under "Upcoming Races." Scroll to "June 10, Paths to Possibilities." Day of event registration will be available at the Killens Pond Sports Complex.

Contact Alicia Hollis at 302-422-4014 Ext. 3015; hollisa@ksiinc.org for more information.

Recent Contributors March 1 - April 30, 2023

Artesian Water Company, Inc.
Beaverdam Pet Food
Best Ace Hardware
Mrs. Virginia Boutin
Mr. & Mrs. John Brink
Mrs. Kim Brittingham
Mr. Robert Burd
Ms. Michelle Cain
Mr. William Cooper
Mr. B. Craig Crouch

Mr. & Mrs. Russell Davies
Ms. Rosemary Dawicki
Delaware City
Refining Company
Delaware Electric
Cooperative, Inc
Embrace Delaware
Ms. Ida Faucett
Fondue. Powered by
Easy Speak Spirits
Four Paws Animal Hospital

Dr. & Mrs. Arthur Gilbert
Mr. James Greenwell
Mr. William Hare
Highmark Blue Cross
Blue Shield Delaware
Mrs. Suzy Hutchison
Mr. Karl Katz
Mr. Benjamin King
Lank, Johnson & Tull
Mid-State Insurance

Mohawk Electrical
Systems, Inc.
Perdue Farms, Inc.-Milford
Mrs. Alta Pontius
R Addington Company
Redner's Markets, Inc.
River Asphalt, LLC
The Bank of Delmarva
Tri Gas & Oil
WSFS Bank
Mr. Ken Wilcox

Make Your Best Shot at the KSI Golf Tournament



KSI Annual 3 Club Golf Tournament



The popular Flamingo Fling ring toss game will be back again this year.

The KSI 3 Club Clifford T. Crouch Memorial Golf Tournament comes back on Friday, September 15, 2023 at Maple Dale Country Club in Dover, Delaware. You can enjoy a great day of golf on a premium course, with food stations on the course, Excel Business Systems' special Mango Water Ice Station, contests, prizes and so much more. And you'll be helping Delawareans with disabilities while you do.

Each golfer receives great amenities, which include:

- > A Round of Golf with Cart

- > 1 Premium Tournament Gift
- > FREE Driving Range Balls
- > Team photo compliments of Mike Baker with C.M. Baker Photography

And if that's not enough, on the day of the tournament, golfers can buy:

- > Golf Ball numbers for Ball Drop
- > 50/50 tickets
- > Chances on the Flamingo Contest
- > Special package of a golf ball, 2 Mulligans, 1 50/50 ticket and 1 Putting Contest chance

- > TEAM chances to advance on the designated hole on the course

Player Registration is \$150/Golfer (\$600/Team).

You can pay online at www.ksiinc.org or pay by check payable to Kent-Sussex Industries) to: KSI, Attn. Alicia Hollis, Tournament Coordinator, 301 N. Rehoboth Blvd., Milford, DE 19963.

You can become a valuable Sponsor of KSI's premium 3 Club Golf Tournament. There are many ways to get recognition for you and your business during the event.

\$3,000-Major Sponsors

- Sponsor name prominently displayed on the course
- Complimentary foursome
- 4 complimentary tickets to KSI's Monster Bash
- Complimentary tee/green signs
- Listing prominently on front page of KSI's golf program, recognized in KSI's newsletter, social media, on KSI's marquee and press releases

\$1,500-Golf Cart Sponsors

- Recognition sign prominently displayed on golf carts
- Complimentary tee/green sign
- Listing in KSI's golf program, newsletter, social media and press releases

\$500-Food Sponsor

- Recognition on hole serving food
- Listing in KSI's golf program, newsletter and social media

\$500-Flamingo Fling Contest Sponsors

- Recognition on contest hole
- Listing in KSI's golf program, newsletter and social media

\$500-Putting Contest Sponsors
(Exclusive Sponsorship \$3,000)

- Recognition on putting contest
- Listing in KSI's golf program, newsletter and social media

\$350-Flag Sponsors

Unique and limited to the 18 flags on each hole's green, embroidered and given to sponsor following tournament play. (Sponsors returning flags the following year will renew at \$200 vs. initial cost of \$350.) Also receives recognition on social media.

\$300-Driving Range Sponsor OR Scoreboard Sponsor

- Recognition prominently displayed at driving range or scoreboard
- Listing in KSI's golf program, newsletter and social media

\$200-Tee/Green Sponsor

- Recognition sign prominently displayed on the course
- Listing in KSI's golf program, newsletter and social media

For more information, contact Alicia Hollis, 302-422-4014 Ext. 3015; hollisa@ksiinc.org.

**KSI Monster Bash Returns**

Held October 28, 2023, the KSI Monster Bash is a fun-filled evening at the beautiful Knutsen Farm in Harrington, DE. There are Live and Silent Auctions, Music, and plenty of Food and Dancing. Costumes are encouraged, with prizes awarded for best costume.

\$5,000 Monster Sponsor

16 tickets, 2 full-page ads in Program Book, 2 reserved tables with signage, mentioned in KSI publications and press releases

\$3,000 Vampire Sponsor

12 tickets, 1 full-page ad in Program Book, 1 reserved table with signage, mentioned in KSI publications and press releases

\$2,000 Skeleton Sponsor

10 tickets, 1 full-page ad in Program Book, 1 reserved table with signage

\$1,000 Zombie Sponsor

8 tickets, 1/2-page ad in the Program Book, 1 reserved table with signage

\$600 Jack-O-Lantern Sponsor

4 tickets, 1/4-page ad in Program Book

\$350 Ghost Sponsor

1 ticket, 1/4 page ad in Program Book

Attend the Monster Bash for \$50 by going to www.ksiinc.org to find the event registration link.



Special food stations on the course keep golfers fueled for fun.

KSI Receives Sizeable Grant to Support Pre-Vocational Training Technology



KSI received a \$20,000 grant in March 2023 from the Helen D. Groome Beatty Trust, a BNY Mellon Mid-Atlantic Charitable Trust. The grant was given in support of KSI's Pre-Vocational training program and intended to fund technological purchases of smart boards and laptops.

Established in 1951 and based in Pittsburgh, Pennsylvania, the Helen D. Groome Beatty Trust's primary interests are supporting education, the arts and human services.

Milford Center Gears Up for Community Custodial Again

Prior to the pandemic, KSI had an extensive collection of community sites where participants had the opportunity to work on custodial crews and learn employment skills while making money. Now after three years overcoming many challenges, the Milford Skill Development Center is slowly restarting this important Pre-Vocational training program. On April 12, three participants and a Direct Support Professional (DSP) did their inaugural service visit to the first KSI custodial customer since the March 2020 national COVID-19 shutdown.

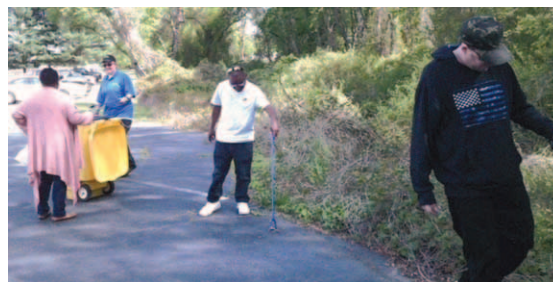
Cedarfield Ruritan Club in Milford contacted KSI late in 2022 to explore KSI's help with cleaning their community center. It was a small, manageable space close to KSI's Milford Center that would only require a few people to service it. And it provided a good test case for KSI's readiness to reenter the



Left to right, Dale Adams, William Labelle, DSP Christina Morrison and Erin Fountain successfully finish up their first service visit at the Cedarfield Ruritan's community center.

contract custodial realm after a long hiatus. Participants were already being trained for such an opportunity by providing janitorial services at the organization's Southern Campus in Georgetown. Additionally, others were being readied by training at the Skill Development Center on a variety of cleaning activities. The Ruritan work gave KSI the next best step towards offering individuals the benefit of working with Pre-Voc community crews.

While the operations team is still evaluating how to proceed with the custodial restart, it's certainly exciting to see participants out and active in gainful community work settings and adding to their life skills in strong ways. Keep an eye on KSI News to see more updates regarding the crew's progress.



Left to right, DSP Vernetta Palmer trains participants Gilliean Walsh, Jason Anthony and Samsun Anthony to excel with their landscape clean up skills and get ready for more opportunities in the community.